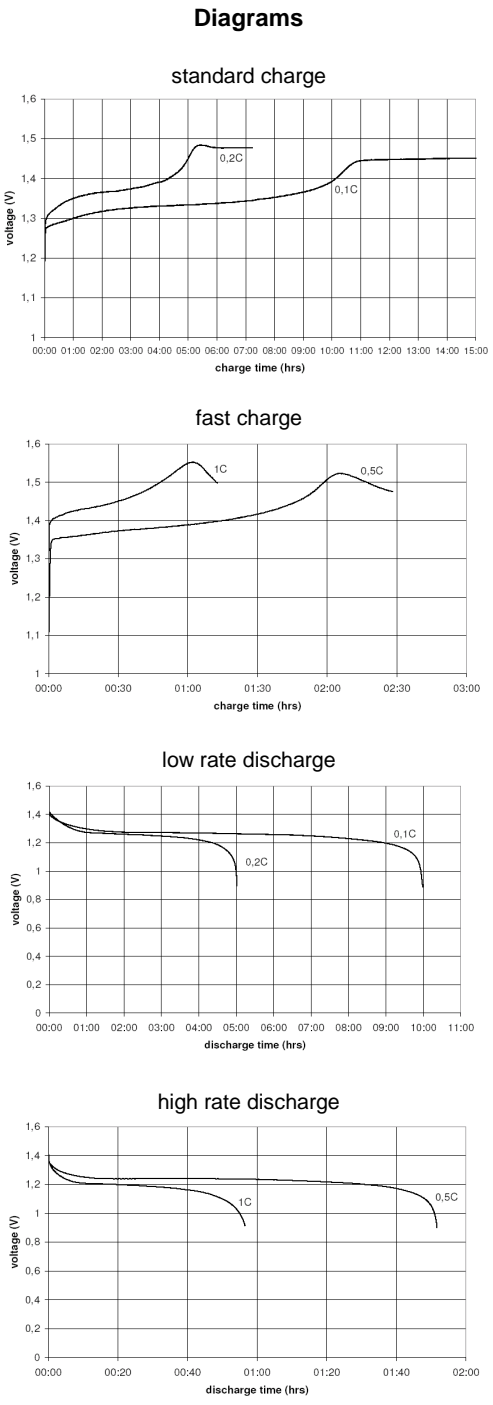


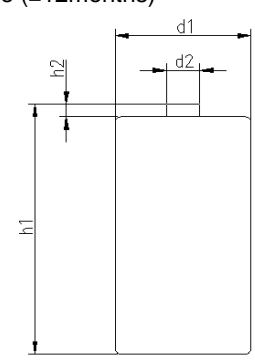
		Conditions	
cell type:		NiMH	
cell size:		D	
nominal voltage:	1.2	V	
max. charge voltage:	1.5	V	
		at standard charge (0.1C / 20°C)	
capacity			
nominal:	10000	mAh	discharge at 0.2C
minimum:	9300	mAh	discharge at 0.2C
	8500	mAh	discharge at 1C
			1.0V end discharge voltage
			ta: 20°C
max. continuous discharge current:	10	A	ta: 0...45°C
charge			
standard charge:	current	time	
quick charge:	1000	mA	14....16hrs
fast charge:	2750	mA	4hrs
	5000	mA	2.3hrs
recommended charge termination control parameters:	0...5	mV	- ΔV (-deltaV)
	0.8...1	°C	temperature rise per minute
	45...50	°C	TCO (temperature cut off)
trickle charge current:	50...350	mA	(recommended)
continuous overcharge: (less than 1 year)	≤ 750	mA	no conspicuous deformation no leakage
internal resistance: (impedance)	≤ 15	mΩ	at 1KHz battery fully charged
life expectancy:	≥ 500	cycles	acc. IEC standard
self discharge			
charge retention:	≥ 60	%	after 28 days storage at 20°C
initial capacity:	≥ 3000	mAh	within 30 days after delivery discharge at 0.2C
ambient temperature range:	0...45	°C	standard charge
	10...40	°C	fast charge
	0...45	°C	discharge (≥1C)
	- 20...65	°C	discharge (<1C)
	- 20...50	°C	storage (≤1month)
	- 20...40	°C	storage (≤3months)
	- 20...30	°C	storage (≤12months)
QCT1:	20/9000/15		
QCT2:	30/8500/15		




mechanical specifications

cell dimensions

diameter d1:		32.8 - 1.0	mm
diameter d2:	max.	9.5	mm
height h1:		61.5 - 2.0	mm
height h2:	min.	1.5	mm
weight:		160 ± 8	g



	ANSMANN Specifications for model:	D - 10000mAh bulk package
	data sheet no. / part no.	5030641
	supplier no.	701364
	author / date	Gramlich / 03.03.2012